

For Quantitative Environmental Product Information

Eco-Leaf

Environmental declaration



Japan Environmental Management Association for Industry
Eco-Leaf Type III Environmental labelling program Office

“EcoLeaf environmental declarations use the LCA method to quantitatively show environmental information for all life cycle stages of products.”

■ How EcoLeaf Was Developed

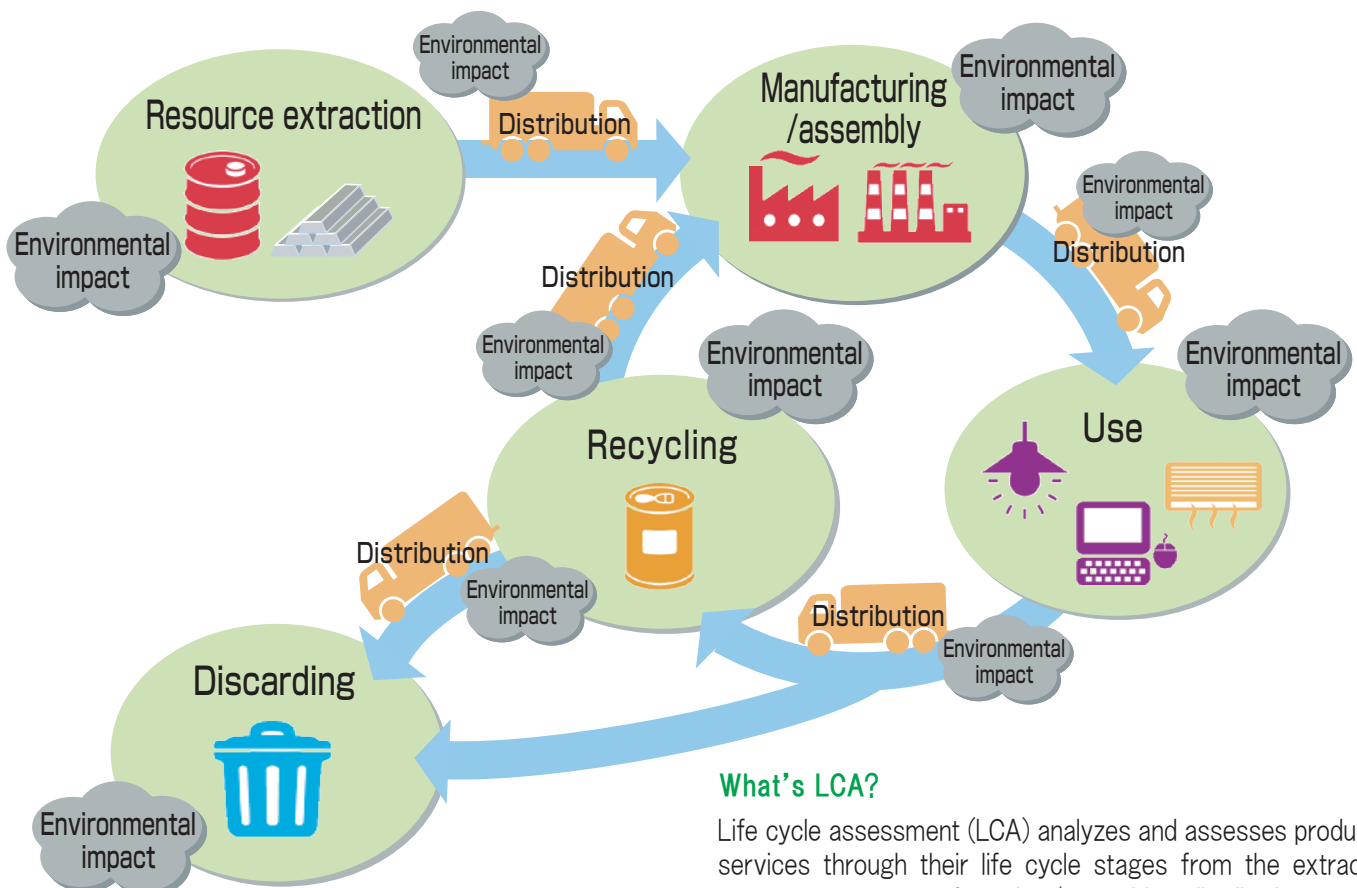
The investigation regarding the way for Japan to combat global warming was conducted in 1998 and the EcoLeaf environmental declaration was developed as the results of conclusions reached in discussion on what environmental declarations should be like in an environmentally friendly society. It is a new made-in-Japan environmental declaration whose full implementation started in April 2002, which is in conformity to ISO type III environmental declarations (ISO 14025).*

■ EcoLeaf Overview

EcoLeaf environmental label use the LCA method to quantitatively show environmental information of products through life cycle stages from the extraction of resources to manufacturing/assembly, distribution, use, and discarding/recycling.

–Why the environmental information of products through their life cycle stages is required to be disclosed? –

These days one often sees “eco-friendly products” and products that are termed “environmentally compatible.” The only way to see if a product is truly “eco-friendly” is by assessing it to see if its environmental impacts are lessened through all stages of its life cycle. A method often used these days to assess the environmental impacts of a product in all its life cycles is life cycle assessment (LCA).



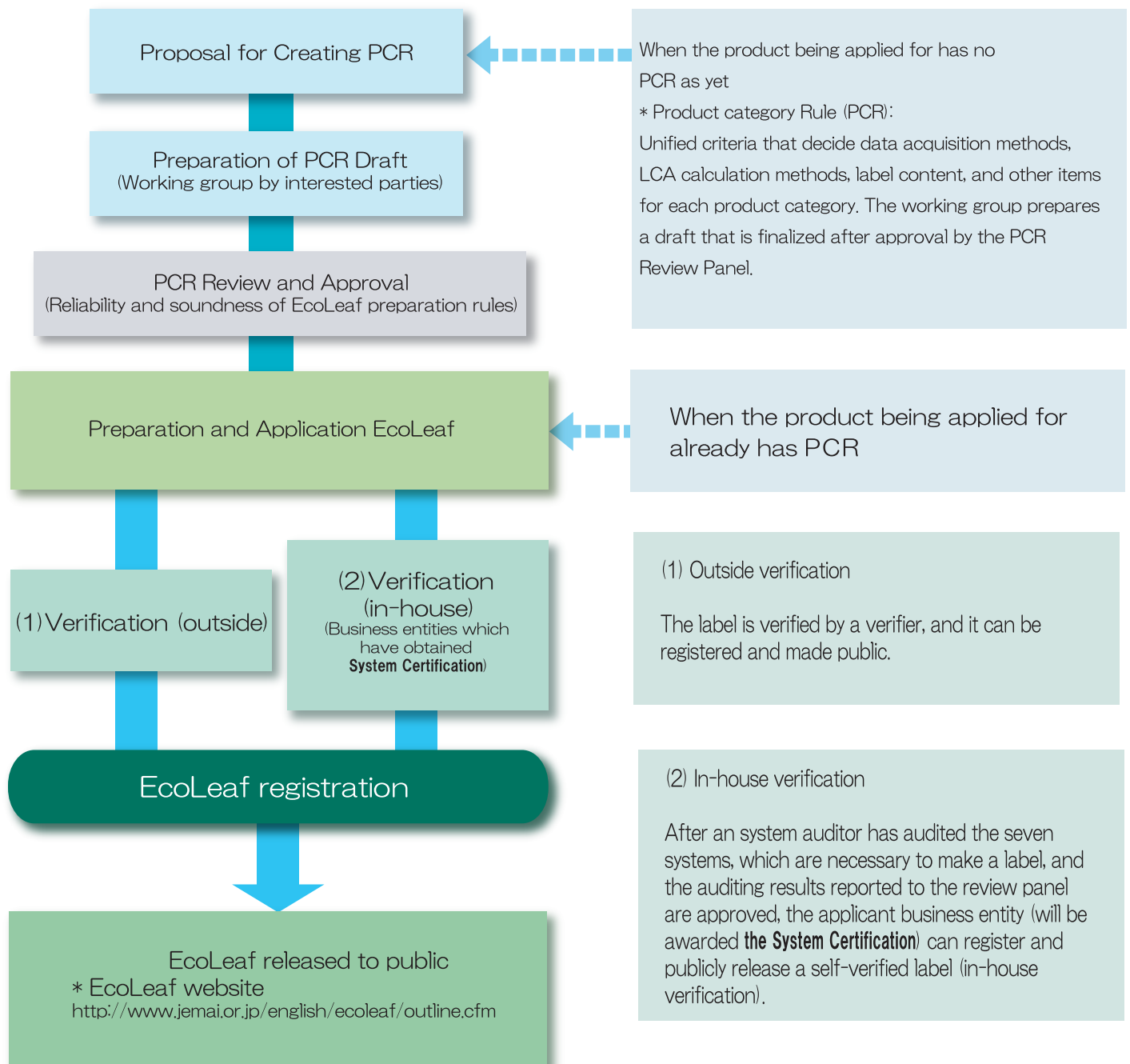
What's LCA?

Life cycle assessment (LCA) analyzes and assesses products and services through their life cycle stages from the extraction of resources to manufacturing/assembly, distribution, use, and discarding/recycling according to a method that anticipates environmental aspects and potential environmental impacts.

- As prizes to retailers for sales campaigns, we chose EcoLeaf products from among many others and used them as a means to show how we are serious about the environment.
- The municipality recognized our active incorporation of environmental considerations into company management, and gave us an environment prize. This was a big topic among the public.

“The EcoLeaf environmental label program provides a mechanism allowing businesses to make highly trustworthy declarations more economically and faster.”

■ Process from application for an EcoLeaf declaration until it is made and released.



“The EcoLeaf environmental declaration helps businesses operate in an eco-friendly manner through active information disclosure on the internet and other media.”

2. Product Environmental Information Data Sheet (PEIDS)

The results of LCA

Compiles the results of inventory analyses and impact assessments for all life cycle stages.

3. Product Data Sheet (PDS)

Collected Data

Gives product information and the energy and material mass inputs/outputs per life cycle stage and per unit product (LCA input data).

Product Environmental Information Data Sheet (PEIDS)

Document control no. F-02A-02
Product vendor ABC Corporation
BioLeaf registration no. XX-04-001

Unit Function DB version V2.01
Characterization Factor DB version V2.01

PSC name Air Conditioner
PSC code XX-01
Product weight (kg) 26.8
Package type ABC-2006
Package (kg) 0.2
Weight total (kg) 28

The Results of LCA

Life Cycle Stage	Unit	Raw material	Production	Distribution	Use	Disposal	Total
Energy Consumption	kg	1.76E+03	1.70E+02	9.62E+00	3.68E+03	+4.35E+02	5.19E+03
	kg	4.21E+02	4.07E+01	2.30E+00	8.80E+02	+1.04E+02	1.24E+03
	kg	1.88E+01	1.20E+00	2.20E+00	2.00E+01	+1.13E+01	3.87E+01
	kg	1.15E+01	1.20E+00	2.20E+00	2.73E+01	+1.05E+01	3.55E+01
	kg	2.58E+00	1.20E+00	2.20E+00	1.08E+01	+5.90E+00	1.34E+01
	kg	1.32E+00	1.20E+00	2.20E+00	1.14E+03	1.00E+02	1.65E+03
	kg	5.70E+00	1.20E+00	2.20E+00	1.14E+03	1.00E+02	2.32E+03
	kg	1.14E+01	1.20E+00	2.20E+00	1.14E+01	6.67E+01	8.67E+01
	kg	2.00E+00	1.20E+00	2.20E+00	1.14E+01	6.67E+01	8.67E+01
	kg	1.14E+01	1.20E+00	2.20E+00	1.14E+01	6.67E+01	8.67E+01
Material resources	kg	3.24E+01	1.20E+00	2.20E+00	0.00E+00	+9.50E+00	1.31E+01
	kg	0.00E+00	0.00E+00	0.00E+00	0.00E+00	+1.59E+02	1.59E+02
	kg	0.00E+00	0.00E+00	0.00E+00	0.00E+00	+1.59E+02	1.59E+02
	kg	0.00E+00	0.00E+00	0.00E+00	0.00E+00	+1.59E+02	1.59E+02
	kg	0.00E+00	0.00E+00	0.00E+00	0.00E+00	+1.59E+02	1.59E+02
	kg	0.00E+00	0.00E+00	0.00E+00	0.00E+00	+1.59E+02	1.59E+02
	kg	0.00E+00	0.00E+00	0.00E+00	0.00E+00	+1.59E+02	1.59E+02
	kg	0.00E+00	0.00E+00	0.00E+00	0.00E+00	+1.59E+02	1.59E+02
	kg	0.00E+00	0.00E+00	0.00E+00	0.00E+00	+1.59E+02	1.59E+02
	kg	0.00E+00	0.00E+00	0.00E+00	0.00E+00	+1.59E+02	1.59E+02
To Atmosphere	kg	1.33E+00	0.00E+00	0.00E+00	2.47E+01	+5.37E+02	3.59E+01
	kg	2.42E+00	0.00E+00	0.00E+00	0.00E+00	+1.93E+00	4.94E+00
	kg	2.48E+00	0.00E+00	0.00E+00	0.00E+00	+1.93E+00	4.94E+00
	kg	2.25E+00	0.00E+00	0.00E+00	0.00E+00	+1.93E+00	4.94E+00
	kg	6.38E+03	9.45E+02	1.72E+02	3.37E+05	+1.78E+03	3.42E+05
	kg	9.25E+01	5.71E+00	6.18E+01	1.75E+02	+3.38E+01	2.48E+02
	kg	1.38E+01	7.41E+03	8.33E+04	1.31E+01	+4.33E+02	3.23E+01
	kg	1.38E+01	5.67E+03	1.04E+02	1.35E+01	+3.80E+02	2.52E+01
	kg	5.19E+03	1.00E+04	1.22E+05	5.89E+03	+2.08E+03	1.29E+05
	kg	3.35E+04	2.33E+04	4.08E+09	3.78E+03	+4.43E+05	4.37E+03
To Water	kg	2.66E+02	1.44E+03	4.00E+03	2.52E+02	+1.08E+02	4.65E+02
	kg	6.35E+04	4.43E+04	7.35E+09	7.40E+03	3.69E+05	8.86E+03
	kg	4.04E+03	2.31E+05	2.10E+04	2.08E+03	+1.06E+03	3.30E+03
	kg	1.75E+02	3.18E+04	8.32E+04	9.84E+03	+5.18E+03	2.24E+02
	kg	9.25E+01	5.71E+00	6.18E+01	1.75E+02	+3.38E+01	2.48E+02
	kg	1.38E+01	7.41E+03	8.33E+04	1.31E+01	+4.33E+02	3.23E+01
	kg	1.38E+01	5.67E+03	1.04E+02	1.35E+01	+3.80E+02	2.52E+01
	kg	5.19E+03	1.00E+04	1.22E+05	5.89E+03	+2.08E+03	1.29E+05
	kg	3.35E+04	2.33E+04	4.08E+09	3.78E+03	+4.43E+05	4.37E+03
	kg	2.66E+02	1.44E+03	4.00E+03	2.52E+02	+1.08E+02	4.65E+02
To Land	kg	6.35E+04	4.43E+04	7.35E+09	7.40E+03	3.69E+05	8.86E+03
	kg	4.04E+03	2.31E+05	2.10E+04	2.08E+03	+1.06E+03	3.30E+03
	kg	1.75E+02	3.18E+04	8.32E+04	9.84E+03	+5.18E+03	2.24E+02
	kg	9.25E+01	5.71E+00	6.18E+01	1.75E+02	+3.38E+01	2.48E+02
	kg	1.38E+01	7.41E+03	8.33E+04	1.31E+01	+4.33E+02	3.23E+01
	kg	1.38E+01	5.67E+03	1.04E+02	1.35E+01	+3.80E+02	2.52E+01
	kg	5.19E+03	1.00E+04	1.22E+05	5.89E+03	+2.08E+03	1.29E+05
	kg	3.35E+04	2.33E+04	4.08E+09	3.78E+03	+4.43E+05	4.37E+03
	kg	2.66E+02	1.44E+03	4.00E+03	2.52E+02	+1.08E+02	4.65E+02
	kg	6.35E+04	4.43E+04	7.35E+09	7.40E+03	3.69E+05	8.86E+03
To Solid Waste	kg	4.04E+03	2.31E+05	2.10E+04	2.08E+03	+1.06E+03	3.30E+03
	kg	1.75E+02	3.18E+04	8.32E+04	9.84E+03	+5.18E+03	2.24E+02
	kg	9.25E+01	5.71E+00	6.18E+01	1.75E+02	+3.38E+01	2.48E+02
	kg	1.38E+01	7.41E+03	8.33E+04	1.31E+01	+4.33E+02	3.23E+01
	kg	1.38E+01	5.67E+03	1.04E+02	1.35E+01	+3.80E+02	2.52E+01
	kg	5.19E+03	1.00E+04	1.22E+05	5.89E+03	+2.08E+03	1.29E+05
	kg	3.35E+04	2.33E+04	4.08E+09	3.78E+03	+4.43E+05	4.37E+03
	kg	2.66E+02	1.44E+03	4.00E+03	2.52E+02	+1.08E+02	4.65E+02
	kg	6.35E+04	4.43E+04	7.35E+09	7.40E+03	3.69E+05	8.86E+03
	kg	4.04E+03	2.31E+05	2.10E+04	2.08E+03	+1.06E+03	3.30E+03

Product data sheet

(Input data and parameters for LCA)

Document control no.	F-03E-02
Product vendor	ABC Corporation
BioLeaf registration no.	XX-06-222

PSC name	Air Conditioner	Product type	ABC-2006
LCA/LCIA in units of:	1	Product weight (kg)	26.8
		Package (kg)	0.2
		Weight total (kg)	28

1. Product information (per unit): parts etc. by material and by process/assembly method

Product	Breakdown of primary materials				Materials and components, which need to apply Process (kg)		Assembly (kg)	
	Material name	Weight (kg)	Material name	Weight (kg)	Process name	Weight (kg)	Process name	Weight (kg)
		1.68E+01			Press molding	1.75E+01	Parts assembly (kg)	5.80E+00
		0.00E+00			Injection molding (kg)	4.00E+01		
		1.00E+00						
		9.30E+00						
		8.00E+01						
		1.00E+01						
	Subtotal	2.80E+01						
	Total					1.80E+01	Subtotal	5.80E+00

Note

Collected Data

2. Production site information (per unit): Consumption of SO₂ and NO_x should be indicated in SO₂, NO₂ equivalent.

Consuming	Classification	Energy	Electricity	Heat	Water
	Distribution	Electricity (kWh)	Heat (kcal/h)	Water (kg)	Water (kg)
	Quantity	2.21E+00	3.85E+01	3.20E+01	
	Note				
Emission	Classification	Water system	Atmosphere		
	Distribution	COD	Discharge (mg/L)		
	Quantity	7.04E+04	2.13E+02		
	Note				

Note

3. Distribution stage information (per unit): means, distance, loading ratio, consumptions and emissions/discharges.

Distribution	Classification	Mode	Distance (km)	Load (kg)	Consumption (kWh)	Emission (kg)
	Conditions	Mode	Distance (km)	Load (kg)	Consumption (kWh)	Emission (kg)
	Quantity	2.80E+01	1.00E+02	7.00E+01	4.00E+03	
	Note					

Note

4. Use stage (per unit): use condition (mode, term) including active mode, standby mode and maintenance.

4.1 Product and accessories subject to this analysis

Product	Classification	Consumption	Consumption	Consumption
	Distribution	Electricity (kWh)	Clean water (kg)	Clean water (kg)
	Quantity	1.53E+01	3.07E+05	3.07E+05

Registered logo and how it is used



No. XX-04-001

Product registration number

The logo with the registration number shows that this product has qualified.

Website <http://www.jemai.or.jp/english/ecoleaf/outline.cfm>

You can view detailed data for each product registration number.

EcoLeaf Public Release

- An EcoLeaf environmental declaration that is approved is given a product registration number and released. With the product registration number, anyone can obtain all the information about an EcoLeaf environmental declaration from the EcoLeaf website.
- Businesses with registered declarations can show them to the public by posting on their websites, affixing them to their products, putting them in their catalogs, or by other means.



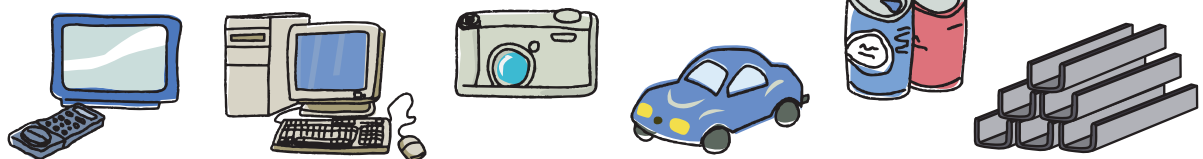
“The EcoLeaf declaration only provides the public with objective information and data, the assessment of which is up to declaration users.”

■ EcoLeaf-Applicable Products and Services

The EcoLeaf environmental declaration is a future-oriented environmental label that uses LCA to provide a multifaceted view of the environmental characteristics of products and services, including those whose environmental information is difficult to assess with a single criterion.

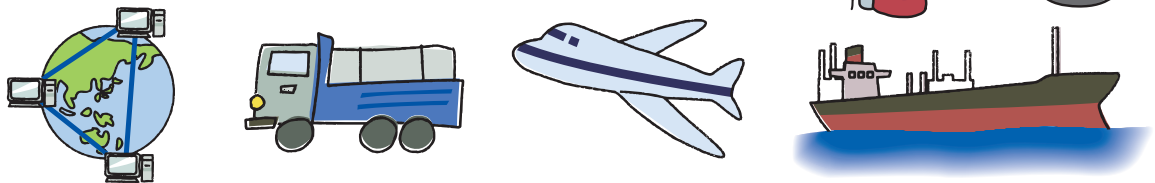
Examples of Products

- Electrical/Electronic Products: Consumer Appliances, IT Equipment, Office Equipment
- Machinery: Automobiles, Transport Equipment, Machine Tools, Precision Machinery
- Materials and Parts: Steel, Nonferrous Metals, Plastics, Glass, Cement
- Construction: Architecture, Civil Engineering, Building Materials, Housing Equipment
- Others: Everyday Articles, Stationery, Office Supplies.



Examples of Services

- Energy: Electric Power, City Gas, Petroleum, LPG
- IT: Communications Services
- Transport: Land, Sea, and Air transport
- Others: Containers and Packaging, Waste Management



■ Activities for Internationalization

In 1999, JEMAI called on western European countries, the Republic of Korea, and Canada for participation and formed the Global Environment Product Declarations Network (GEDnet), which is working to broaden the use of type III environmental labels.



The GEDnet website is <<http://www.gednet.org>>

Efforts are underway to create international standards for these type III environmental declarations.

*An official international standard (ISO 14025) for type III environmental declarations has been issued in around July 01, 2006. JEMAI has been actively involved in this process in many ways including sending representatives to ISO conferences for creating international standards



EcoLeaf Type III Environmental Labelling Program Office

Japan Environmental Management Association for Industry

7th Floor, SMBC Kandaekimae Bldg,

2-1 Kajicho 2-chome, Chiyoda-ku, Tokyo 101-0044

Telephone: 81-3-5209-7712 Facsimile: 81-3-5209-7716

Email: ecoleaf@jemai.or.jp

Website: <http://www.jemai.or.jp/english/ecoleaf/outline.cfm>